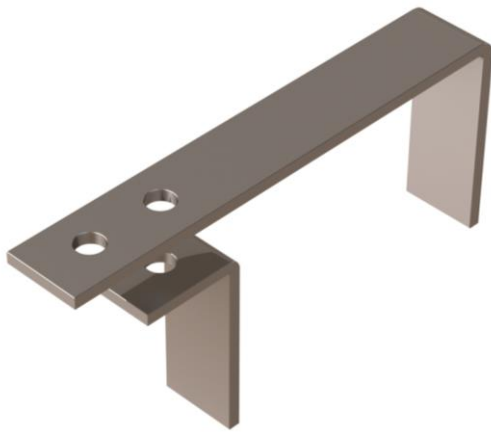


Head Restraints

These types of products are generally used to restrain the tops of free standing walls by tying them securely to an overhead structure, thus preventing sideways movement.



Product

VHR Head Restraint

The VHR head restraint is designed to restrain the top of the inner leaf of cavity walls.

The standard restraint can be used to restrain both 100mm and 140mm lead thicknesses and consists of two angles fixed using a single M8 bolt which effectively clamp the top of the wall. Vista recommends using an M8 M.D. Anchor when fixing into concrete and either an M8 Isolated setscrew (universal beams) or an M8 H.S.M bolt (hollow sections) into structural steelwork.

The VHR is capable of restraining loads up to 0.75kN and are generally positioned at 450mm or 900mm centres depending on the load at the head of the wall.

The VHR can also be manufactured to fit 215mm blockwork

Installation

1. Position larger angle, mark then drill hole.
2. Build up inner leaf
3. Reposition larger angle, offer up the smaller angle and fix through both angles with the selected fixing ensuring the anchor is tightened to the correct torque

Tightening torque:

M8 M.D. Anchor – 15Nm

M8 Isolated setscrew – 14Nm

M8 H.S.M. Bolt – 25Nm

Safety Precautions

VHR head restraints are manufactured from sheared plate and strip and may contain sharp edges. Suitable personal protection should always be used when handling/installing these products.