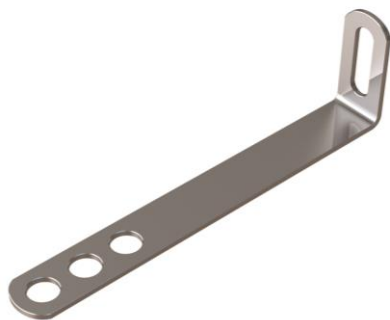


## Lateral Restraint Products

These products allow masonry walls to be restrained back to other elements of the structure. This could be pre-existing walls, or new or pre-existing steel work. The ties, once in position, prevent sideways movement between a wall and another structure.



### Product

## VS7 Slotted Frame Cramp

Frame cramp (supplied in stainless or galvanised steel) for restraining masonry to new or existing structures and for building in non-structural elements (frames etc). Supplied with a slot in upstand to allow various fixings.

Sizes:

75mm	200mm
100mm	225mm
125mm	250mm
150mm	275mm
175mm	300mm

### Performance

VS7 75mm-175mm	
Shear Load Capacity	<b>1180N</b>
Compressive Load Capacity	<b>2490N</b>
Tensile Load @ Capacity (top of slot)	<b>490N</b>
Tensile Load @ Capacity (bottom of slot)	<b>4880N</b>
Minimum Embedment	<b>62.5mm</b>
Minimum Mortar Joint	<b>10mm</b>

#### Safety Precautions

VS7 Slotted Frame Cramps are manufactured from sheared plate and strip so may contain sharp edges. Suitable personal protection should always be used when handling/installing these products.