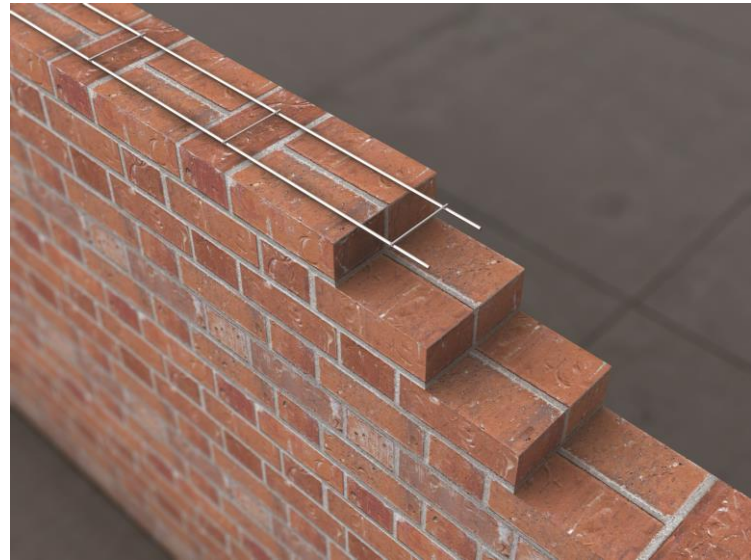
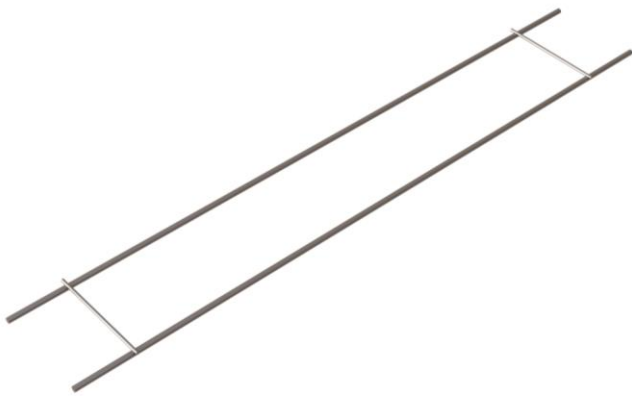


Brickwork Reinforcement

This type of product increases the rigidity of masonry panels by introducing steel into the bed joint of the wall, either to merely resist cracking or in a more structural sense.



Product

VW3 Vista Weld 3

Vista have developed Vista Weld 3 to meet the ever increasing requirements of specifiers. Vista Weld 3 is a welded ladder type Bed Joint Reinforcement with 3mm outer wires. It is generally used as a structural product but also ideal for crack control. Available in Stainless Steel Grade 304 S15 and in numerous widths to suit any brick and block thickness. Vista Masonry Reinforcement conforms to BS 5628 : Part 2 200. Also available in Galvanised.

Product Width	Wall Width
60mm	100mm
100mm	140mm
150mm	190mm
160mm	200mm
175mm	215mm

Performance

VW3 Vista Weld 3	
Length	2700mm +/- 1.5%
Profile Height	3.5mm +/- 0.4mm
Longitudinal Wire Size	3.0mm +/- 0.1mm
Cross Wire Size	2.5mm +/- 0.1mm
Pitch of Cross Wires	450mm +/- 3.0%
Characteristic Yield Strength	500N/mm ²
Lap Length	225mm
Shear Load Capacity Welds	2988N

	VW3-060-STST	VW3-100-STST	VW3-150-STST
Width	60mm +/- 1.5mm	100mm +/- 1.5mm	150mm +/- 1.5mm
Bond Strength	3060N	4540N	4430N

Safety Precautions

VW3 Vista Weld 3 is manufactured from sheared plate and strip so may contain sharp edges. Suitable personal protection should always be used when handling/installing these products.