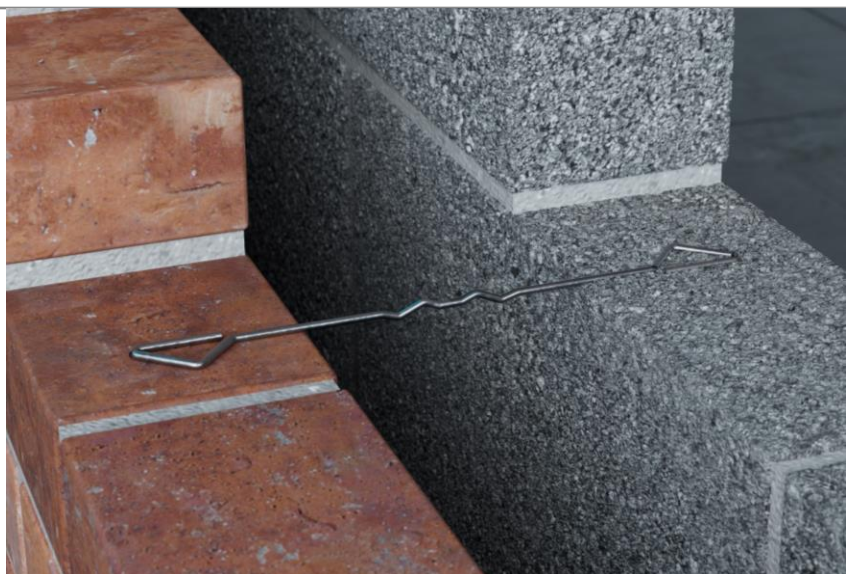
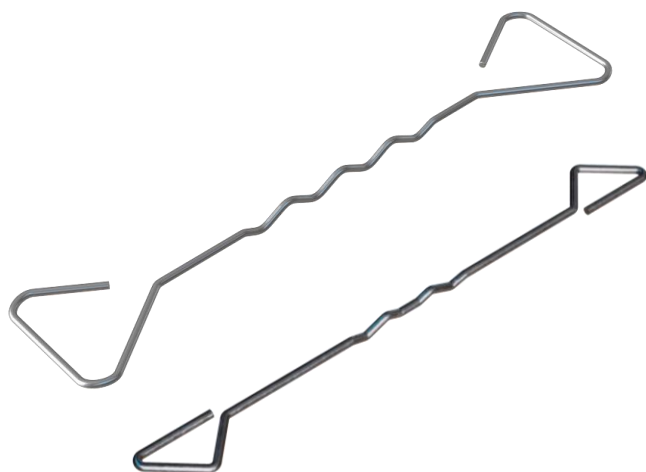


Masonry to Masonry Wall Ties

These products act to secure two leaves of a cavity wall to each other, allowing them to act as one structurally. A cavity tie usually incorporates some mechanism, (usually a change of shape) to discourage moisture moving across the tie. Most cavity ties are available with a dedicated clip to secure insulation (usually in sheet form) within the cavity.



Product

VE2 General Purpose Wall Tie

The VE2 comes in two styles. Both have a multi-drip in the middle of the tie. The drip features prevent moisture from traveling across the cavity. Both designs allow them to be installed in either orientation. The VE2 is classified as a Type 2 tie, permitting a maximum building height of 15 meters. It is suitable for flat sites with a basic wind speed up to 31 m/s and an altitude below 150 meters above sea level. It is classified as a Type B tie.

CODE	LENGTH	CAVITY	UNITS
VE2-250-STST	250mm	101-125mm	250 Box
VE2-250-25BAG	250mm	101-125mm	25 Bag
VE2-275-STST	275mm	126-150mm	250 Box
VE2-275-25BAG	275mm	126-150mm	25 Bag



Testing

Tested as a Type 2 (Strength) tie.

275mm and 250mm long stainless steel wall ties were tested in tension and compression over a nominal cavity width of 150mm and 125mm respectively in accordance with BS EN 846-6 Methods of Test for Ancillary Components for Masonry. Part 5; Determination of tensile and compressive load capacity and load displacement characteristics of wall ties (Couplet test).

Summary of Declared Values:

Load Direction	Maximum Declared Value at Ultimate load (N)
275mm	
Tension	2200
Compression	1410
250mm	
Tension	1914
Compression	1110

Tested as a Type B (Sound) tie.

The VE2 stainless steel wall ties, measuring 250mm, and 275mm in length were independently tested across working cavity widths of 125mm, and 150mm respectively. The testing evaluated their dynamic stiffness using the methodology outlined in BRE Information Paper IP 3/01: "Dynamic Stiffness of Wall Ties Used in Masonry Cavity Walls: Measurement Procedure."

Tests at Ceram Building Technology have proved that the Vista VE2 General Purpose Tie has a measured dynamic stiffness of 12.5MN/m³ in a 100mm cavity and is therefore more than suitable for external walls at a standard density of 2.5 per square metre.

Additional Information

BBA Approved general purpose wall ties (Agrément Certificate: 17/5462).(Only applies to the VE2-275-STST)

Material – Manufactured from grade 304 stainless steel.

Behaviour in relation to fire – Non combustible (as defined in the national Building Regulations).

Durability – Excellent corrosion resistance and a service life of not less than 60 years.

Compliance – Tested as Type B (sound) and as Type 2 (strength) to BS EN 845-1.

