

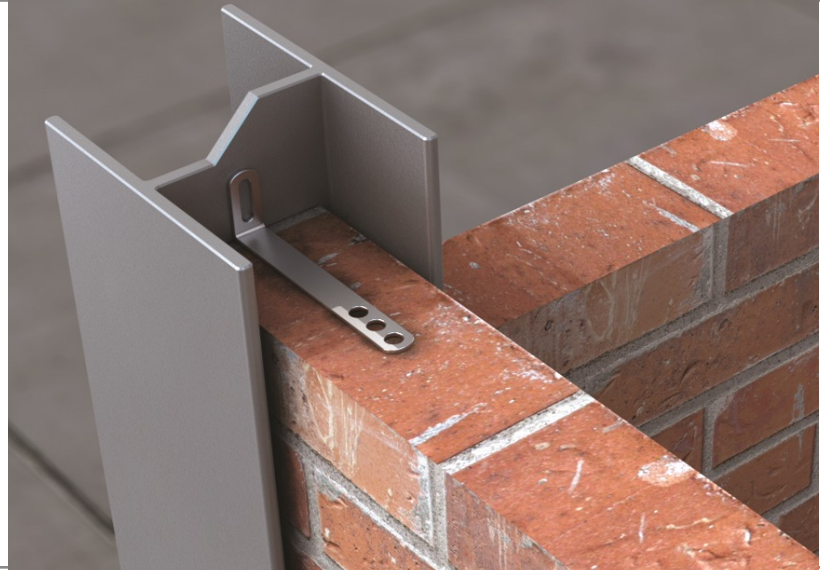
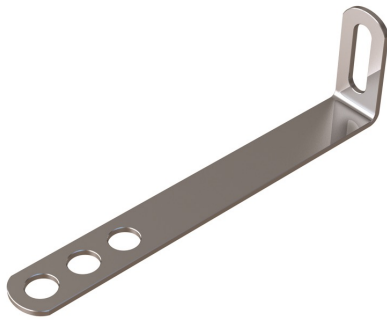
VS7 Slotted Frame Cramp

Data sheet

Issue Date:
March 2026

Lateral Restraint Products

These products allow masonry walls to be restrained back to other elements of the structure. This could be pre-existing walls, or new or pre-existing steel work. The cramps, once in position, prevent sideways movement between a wall and another structure.



Product

VS7 Slotted Frame Cramp

Frame cramp (supplied in stainless to BS EN 10088-1.4301) for restraining masonry to new or existing structures and for building in non-structural elements (frames etc). Supplied with a slot in upstand to allow various fixings.

Sizes: 75, 100, 125, 150, 175, 200, 225, 250, 275, 300mm

Performance

VS7 75mm-300mm	
Shear Load Capacity @ Top of Slot	650N
Tensile Load Capacity @ Top of Slot	490N
Tensile Load Capacity @ Bottom of Slot	4880N
Compressive Load Capacity	2490N
Minimum Embedment	62.5mm
Minimum Mortar Joint	10mm

Safety Precautions

VS7 Slotted Frame Cramps are manufactured from sheared plate and strip so may contain sharp edges. Suitable personal protection should always be used when handling/installing these products.

