

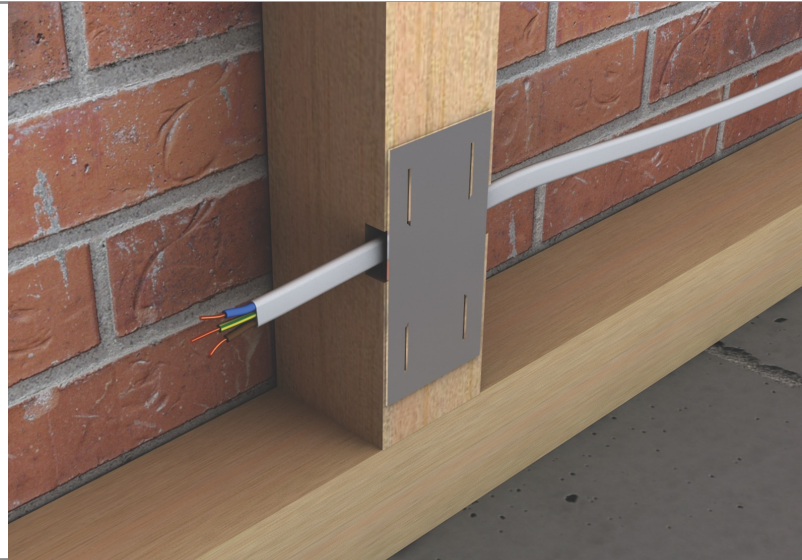
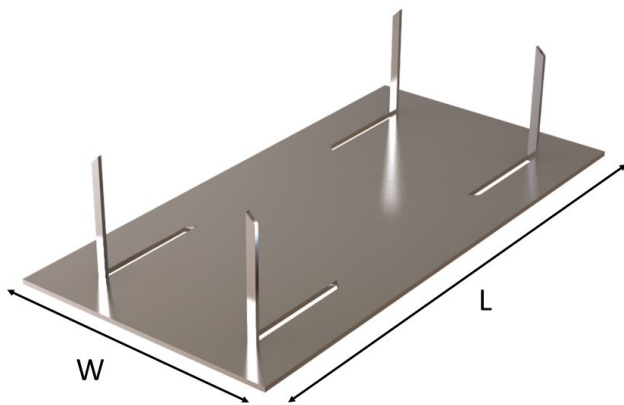
# SPL Safe Plate

Data sheet

Issue Date:

May 2026

The SPL is secured to timber studding by use of pre-punched spikes, to protect plumbing and electrical wiring against random nailing. Manufactured from 0.9mm pre-galvanised steel to BS EN 10346 DX51D +G275. Box quantity 200.



## Product

Features:

- Easy to install

Packaging:

- Box Quantities 200

Product Details		
Product code	Dimensions (mm)	
	W	L
SPL/54	54	90

